

HOSPICE CARE

WHAT IS HOSPICE CARE?

For those individuals who have reached the end of their lives, hospice care is a solution that is aimed towards making the patient as comfortable as possible while they live through their final days or months. Support is provided to the family as well.

DEMENTIA

patients had the largest # of days of hospice care on average in 2016.



59%

OF MEDICARE HOSPICE PATIENTS ARE WOMEN.



TIME FOR HOSPICE?

- Life-expectancy is less than 6 months
- Increasing doctor, hospital, or emergency room visits
- Increase in pain medication
- Increase of time in bed or chair
- Weight loss or weight gain
- Unable to care for oneself
- Feeling more tired, weak or incoherent
- Shortness of breath, even when resting
- Loss of appetite



60%

OF HOSPICE PATIENTS RECEIVED CARE AT THEIR HOME AT THE TIME OF DEATH.

HOSPICE WHERE?

- Home
- Hospice facilities
- Hospitals
- Nursing homes
- Long-term care facilities



DAILY IN-HOME HOSPICE COST:

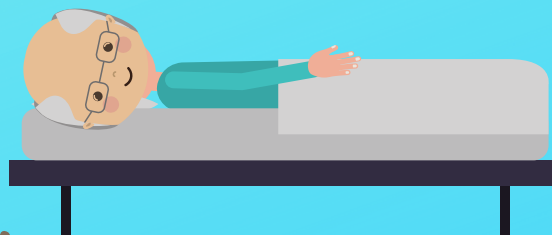
\$100 - \$200

- Health insurance pays
- Medicare & Medicaid pays



Average survival was 29 days longer for hospice patients than for patients without hospice care.

29



HOSPICE CARE INCLUDES:

- Manages pain & symptoms
- Assists with the emotional & spiritual aspects of dying
- Medications
- Medical equipment
- Speech & physical therapy when needed
- Makes short-term inpatient care available when pain or symptoms become too difficult to manage
- Respite for caregivers
- Care guidance for the family caring for the patient
- Grief support & counseling for surviving family and friends.

VOLUNTEERS PLAY AN IMPORTANT ROLE IN HOSPICE

Hospice is unique in that it is the only provider with Medicare requiring volunteers to provide at least 5% of total patient care hours.

HOSPICE TEAMS OFTEN INCLUDE:

by Yvonne M. Feltman

SPIRITUAL COUNSELORS

HOME HEALTH AIDES

VOLUNTEERS

NURSES

PHYSICIANS

THERAPISTS

BEREAVEMENT COUNSELORS

SOCIAL WORKERS



SeniorAdvice