



# SKILLED



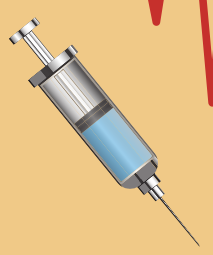
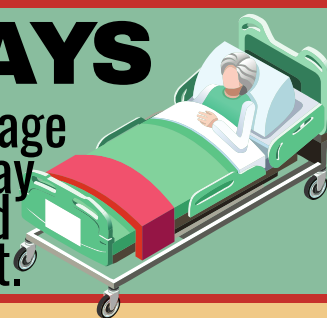
# NURSING CARE

## WHAT IS SKILLED NURSING CARE?

Often referred to as a nursing home, a Skilled Nursing Facility (SNF) or a skilled nursing unit is similar but more often a temporary solution to a specific medical need or to aid in recovery after a hospital stay. A Skilled Nursing Facility is a licensed health facility that has at least one licensed health professional available to provide care 24/7.

## 28 DAYS

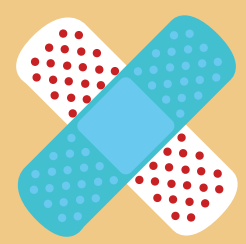
is the average length of stay at a Skilled Nursing Unit.



**Giving Injections**



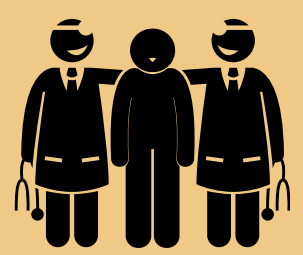
**Managing Patient Care**



**Wound Care**



**Medication Administration**



**24-Hour Care**

## Skilled Staff Includes:



**Nurses**



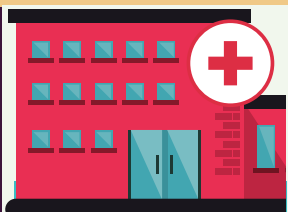
**Therapists**



**Specialists**



**Doctors**



## Where is Skilled Nursing?

- A hospital wing
- An independent facility
- A unit within a nursing home
- An assisted living home
- A personal residence or group home
- A Continuing Care Retirement Community (CCRC)

## \$7,148 per month

## is the average cost for a semi-private room in a Skilled Nursing Facility.

## Common Conditions Treated:



**Acute Illness**



**Stroke Recovery**



**Alzheimer's Disease Care**



**Parkinson's Disease Care**



**Infection Control**



**Pain Management**

REFERENCES  
<https://www.senioradvice.com/articles/the-difference-between-skilled-nursing-and-nursing-home-care>  
<https://www.genworth.com/aging-and-you/finances/cost-01-care.html>